

NORDFAB

Ducting

QUICK-FIT[®]

Clamp-Together Ducting

Installation Tips

To ensure that Nordfab's Quick-Fit system continues to be the "World's Fastest Ducting," here are a few tips to help your installation go quickly, smoothly, and safely.



The world's fastest ducting[™]

STEP ONE: Make Sure Your Shipment is Complete and Undamaged. Nordfab ships most orders FOB Nordfab or “Free On Board.” This means that it is your responsibility to ensure that the materials you receive do not have freight damage and that the carrier has delivered all the boxes in your shipment.

Inspect all boxes for outward damage BEFORE signing for receipt. The boxes should not be crushed, torn or otherwise damaged. **If you find damage, either refuse the shipment or note the issue on the receipt you sign. Unless you do this, any future claims will be virtually impossible to collect.**

Additionally, before signing for your shipment, ensure that all boxes are accounted for. You can find the number of boxes in a shipment by checking the delivery receipt the driver will ask you to sign. Again, note any discrepancies before signing. **IMPORTANT SAFETY NOTE:** Beware of the sharp metal staples used to seal the shipping boxes.

STEP TWO: Understanding the Packing Documents.

Nordfab packs boxes with the goal of reducing shipping costs, not in the order the parts are needed. Do not simply tear into the boxes and begin removing parts. On the outside of each box is a label that shows the contents. Locate these labels before opening any boxes as it will give you details as to what is in each box. Avoid opening boxes until you need them to reduce the chance of parts being lost or damaged on site.

If you have any problems, call your dealer as he is in the best position to rectify any problems with your particular order. Have all packing documentation with you when you call.



Make sure your parts match the packing list

STEP THREE: Preparing to Install Your Ducting. It is important for the installer to understand the layout the system designer planned for the ducting. Follow all local codes and regulations and note loading capabilities of structures to ensure the ducting is properly supported and that the building can carry the ducting system. If your installer doesn't understand the layout, he will not to have all the parts necessary to complete the job. If you do not have a clear understanding or drawing of the system you are about to install, please call the person who designed the system before you begin work.

STEP FOUR: Laying out the duct. Begin by laying the system out on the floor below where it will hang. Remember that two parts that connect will often not be in the same box, so this step dramatically reduces the time it takes to complete the job once the installation begins.

NOTE: This is the step where you could possibly find that you do not have all the parts necessary to complete the job. In that case, contact your dealer immediately so that he can get a head start on getting you the needed parts as well as help you verify that your layout matches the one planned by the system designer.

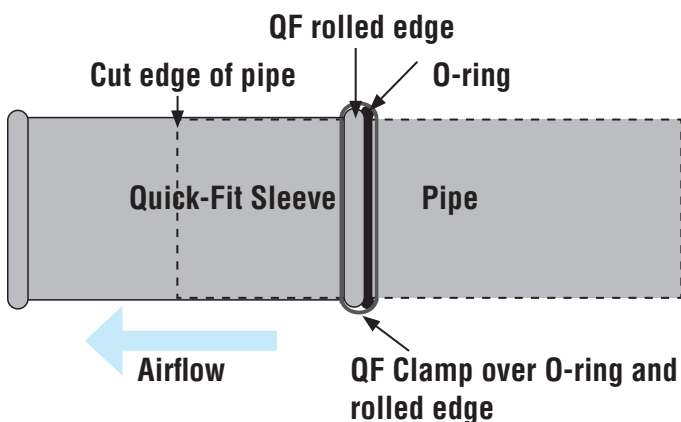


Lay your system out on the floor

STEP FIVE: The Quick-Fit Sleeve. One of the most important

benefits of Quick-Fit is that it is not necessary to take exact measurements before cutting each piece of pipe. The Quick-Fit Sleeve is an 11-inch section of pipe that has a slightly larger diameter than a standard QF duct. To use the Quick-Fit Sleeve, simply:

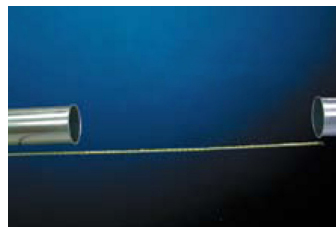
- 1) Measure the distance you want to span.
- 2) Cut the pipe (NOT the 11" Quick-Fit Sleeve) approximately 4" shorter than the length necessary to complete the span.
- 3) Make sure the cut is free of burs and that it maintains its round shape.
- 4) Slip the cut end of the pipe into the Quick-Fit Sleeve.
- 5) Clamp one end of the assembly into place. Be sure that the 11" sleeve is downstream of the cut piece.
- 6) Slide the pipe into the sleeve to the desired length.
- 7) Slide the o-ring across the rolled edge of the 11" sleeve so that it is around the cut piece of pipe. Roll it until it is seated against the rolled edge of the sleeve. The O-ring will form a seal and provide a rolled surface for the QF Clamp to grab.
- 8) Use a standard clamp to connect the rolled edge of the Quick-Fit Sleeve and the O-ring together.
- 9) Once in place, you can re-adjust the length of the assembly by releasing the clamp and changing the length of the pipe that is inserted into the Quick-Fit Sleeve.
- 10) **IMPORTANT SAFETY NOTE:** To ensure a strong, safe and stable system, there must always be at least four inches of duct inserted into the Quick-Fit Sleeve.



Useful Tools and Important Safety Information

Always use proper safety equipment when installing Quick-Fit.

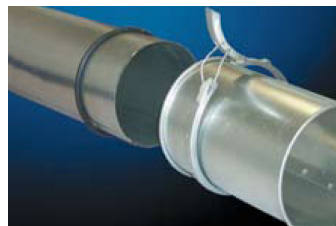
- **Work Gloves:** Sheet metal can be sharp and burs are possible.
- **Eye & Ear Protection:** for use whenever cutting pipe.
- **Safety Helmet:** to avoid injury from falling parts or tools
- **Cutting Device:** There are several options for cutting galvanized or steel ducting. Whether you use a hacksaw, sawzall, nibbler or other method, it is important that the cut is clean and that the pipe is not crushed into an oval shape during cutting. Follow all manufacturer safety guidelines for your cutting tool.
- **File:** This ensures that any cuts you make for the Quick-Fit Sleeve sections are clean.
- **Scaffolding and proper safety equipment for working off the ground.**
- **Level:** Most duct runs should be level. But NOTE that on some applications such as cement or oil mists, it is preferable for the runs to be angled so that any material that falls out of the airstream will drain out of the duct.
- **Plumb:** It is advisable that all vertical runs be plumb.



Measure



Cut



Slide Quick-Fit Sleeve on



Clamp



Finish

STEP SIX: Supporting Your Ductwork. Nordfab has a variety of duct hanging devices, but it is your responsibility to ensure the safety of all ducting. Please check with local agencies to ensure that your ducting is supported in a way that meets local codes. When determining the weight your ceiling and hangers must support, always allow for the ducting being 100 percent clogged with whatever material is being conveyed.

STEP SEVEN: Pre-Stretch Your Clamps. The Nordfab clamps are designed to provide a tight seal, which means that they also require some pressure to close. By pre-stretching the clamp around the rolled edge of a single piece of pipe, you can make it much easier to close when you connect two pieces together.



Pre-stretch your clamps



Clamp pieces on ground

STEP EIGHT: Clamp As Many Parts Together As Possible on the Ground.

It is much faster and easier to close the clamps on stable ground than on a scaffold. Therefore many installers connect two or three pieces of ductwork together on the floor before lifting them into place.

IMPORTANT SAFETY NOTE: The ducting must be properly supported. It is unsafe to have several segments cantilevered without support. Each additional piece of pipe puts enormous amounts of pressure on the clamps and hangers which could result in catastrophic clamp or hanger failure.



Lift pieces into place

STEP NINE: Use the Cotter Pins. After closing each clamp, install one of the enclosed cotter pins into the hole as shown. This ensures that the clamp cannot come open unexpectedly. Install the cotter pin as soon as a clamp is closed and beware of clamps until the cotter pin is safely installed.

IMPORTANT SAFETY NOTE: On very rare occasions, unpinned clamps can spring open unexpectedly which can cause the pipe to drop. Additionally, the handles on unpinned clamps have been known to cause injury when they sprung open.



Use Cotter Pins



Clamp together

If you have any questions, please do not hesitate to contact your Nordfab dealer or to visit our web site.

Your Local Ducting Expert:

Jamieson Equipment Company, Inc.
Toll Free 800.875.0280
sales@jamiesonequipment.com
www.jamiesonequipment.com

